

LEAVES

Vol. 31, No. 2
Summer 2006

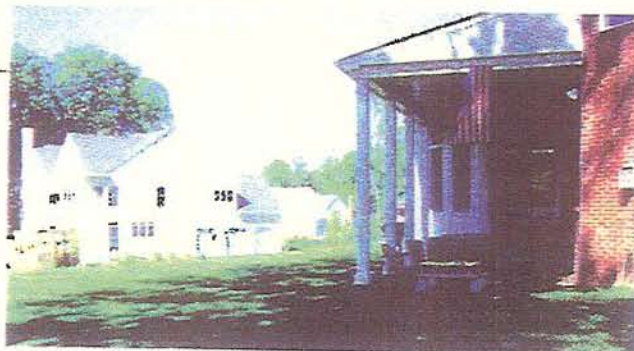
■ Close to Home

Extending Your Indoor Living Outside

When you buy a home, how often do you include the yard or patio in your decorating scheme? Probably not often, because we traditionally see the outside as a totally separate space to be enjoyed when weather, seasons and bugs permit. Doug DeLuca, owner and founder of Falls Church-based Federal Stone and Brick sees a home's outside as part of its overall living space and is on a campaign to change the way we use and decorate our outdoor digs.

DeLuca founded Federal Stone and Brick in 2001 and since then, often using the sky as the space's ceiling, has created spectacular outdoor living, dining, and socializing exteriors that extend a home's personality and living potential. Fully equipped kitchens, built-in fireplaces, fountains and a plethora of other amenities are set off by DeLuca's and his team's masonry talents. And it is all designed to complement the personality of the home as well as the home's owners. "We never embark on a project until we develop a profile of the homeowners. We then take all this information and bring it to life in 3-D drawings that literally let owners step into the space before we even begin construction. By the time we begin construction, owners have an intimate feel for what this space will do and be," explains DeLuca.

To let a seasoned eye help extend your indoor living outside, contact Federal Stone and Brick at 703-536-5507 or go to the web site www.federalcompany.com. ■



Before



After

*Now and Forever.*TM

EXCLUSIVE AFFILIATE OF CHRISTIE'S GREAT ESTATES